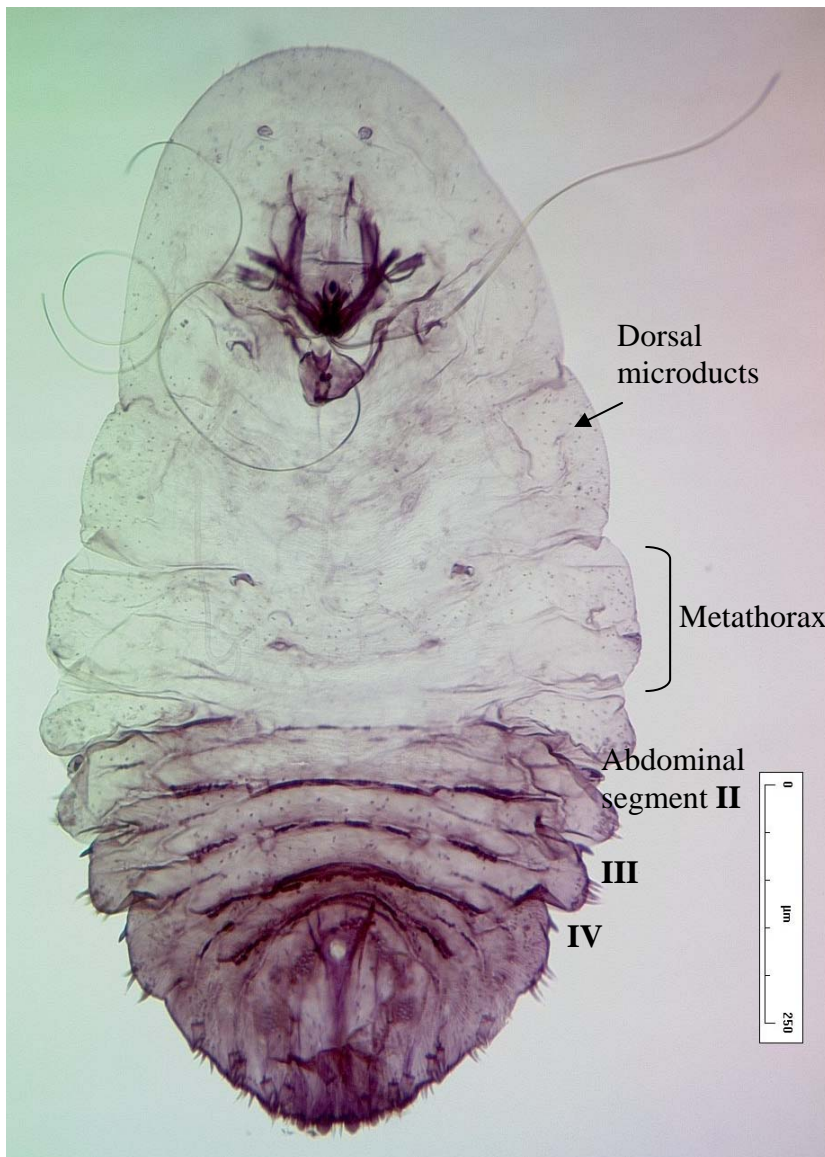
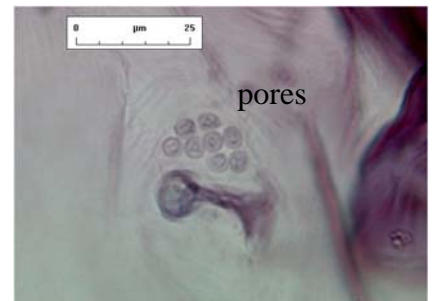


Web Fig. 1 : *Lepidosaphes ussuriensis*
Slide-mounted adult female

Web Fig. 2: *Lepidosaphes ussuriensis*, slide-mounted adult female (Russia, Southern Primorye, Vladivostok, leg. B. Chumakova, on *Syringa amurensis*)



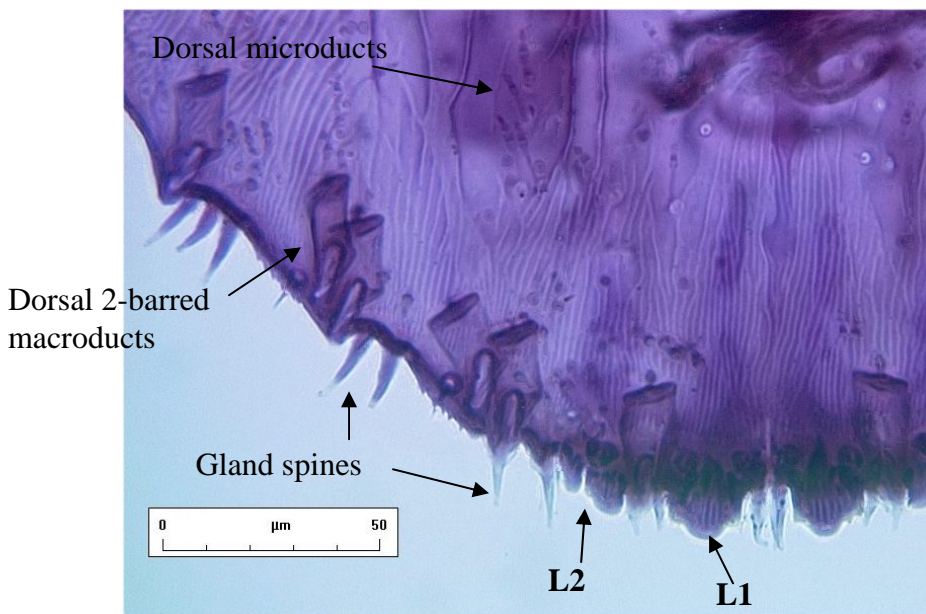
Conical cuticular processes



Anterior spiracle



Tubercles with spines



Pygidial end

Lobes without parapyse