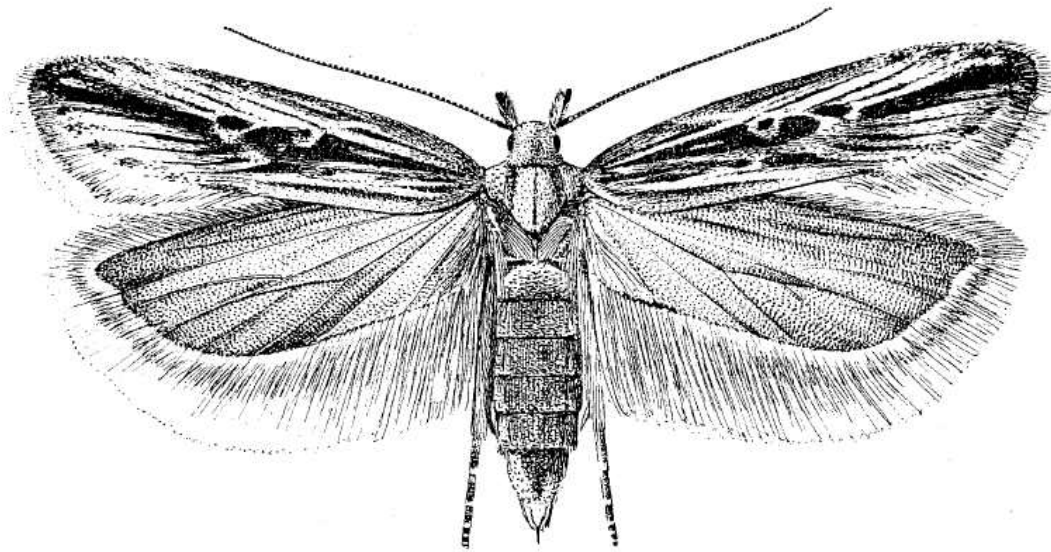


Habitus male

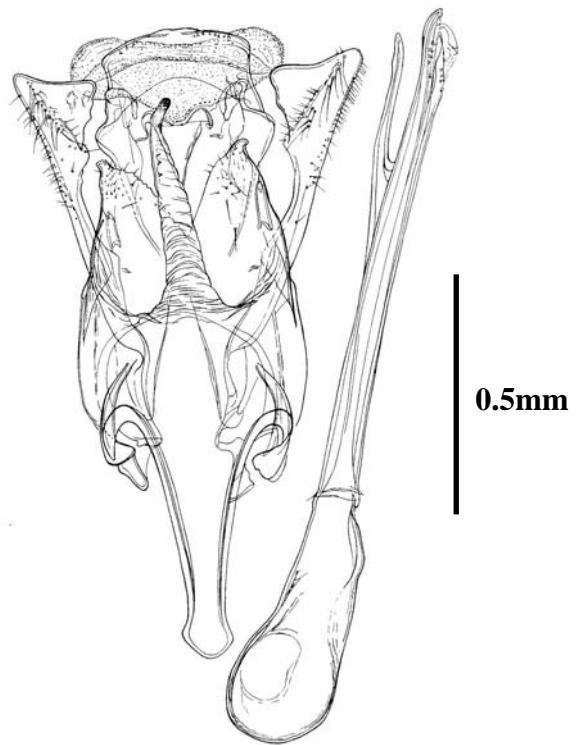
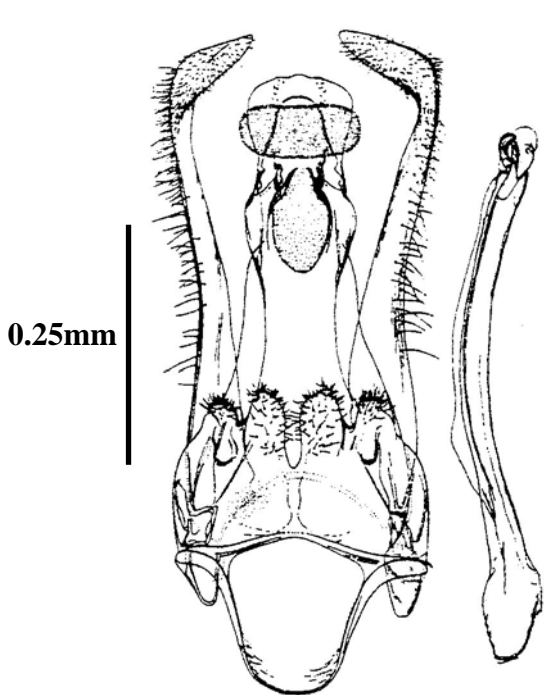
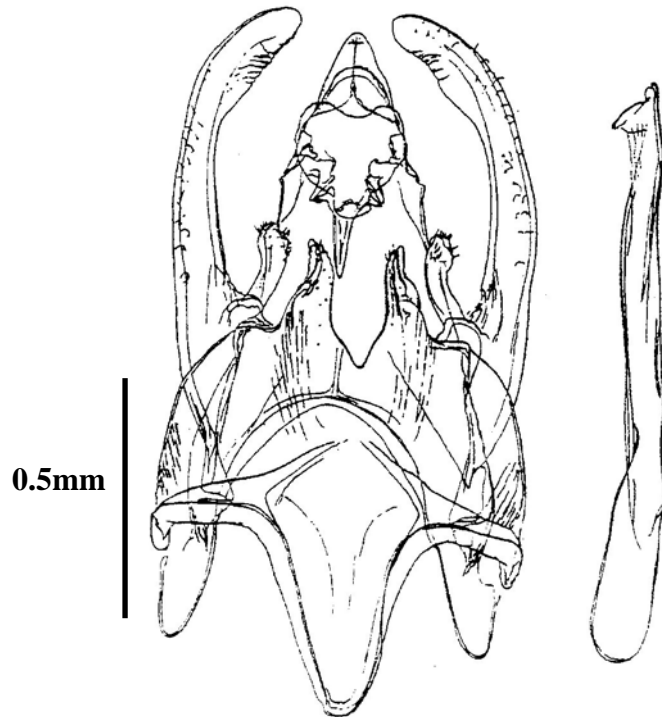


Habitus female

Forewing 7.2 (male) to 10.6 (female) mm.

Web Fig. 1 : *Scrobipalopsis solanivora*
adults (after Povolný, 1973)

Scrobipalopsis solanivora



Phthorimaea operculella

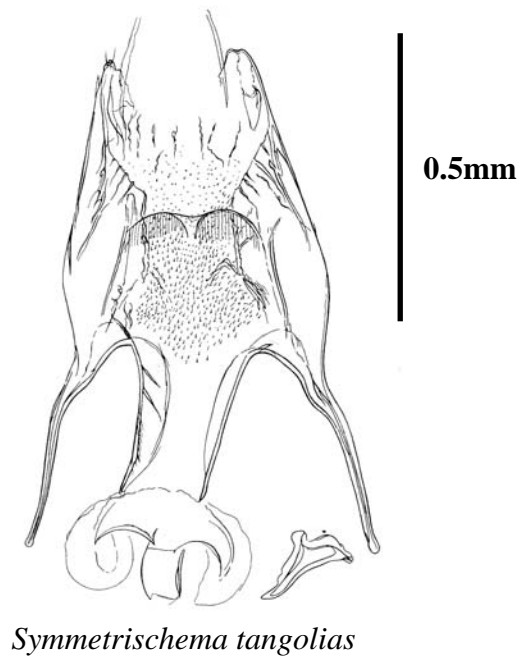
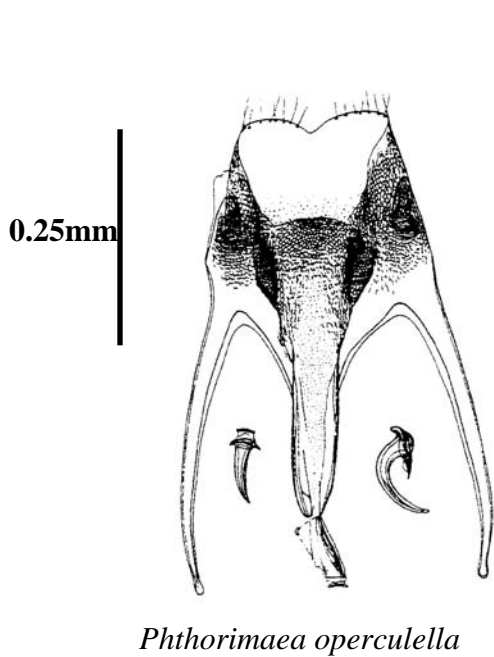
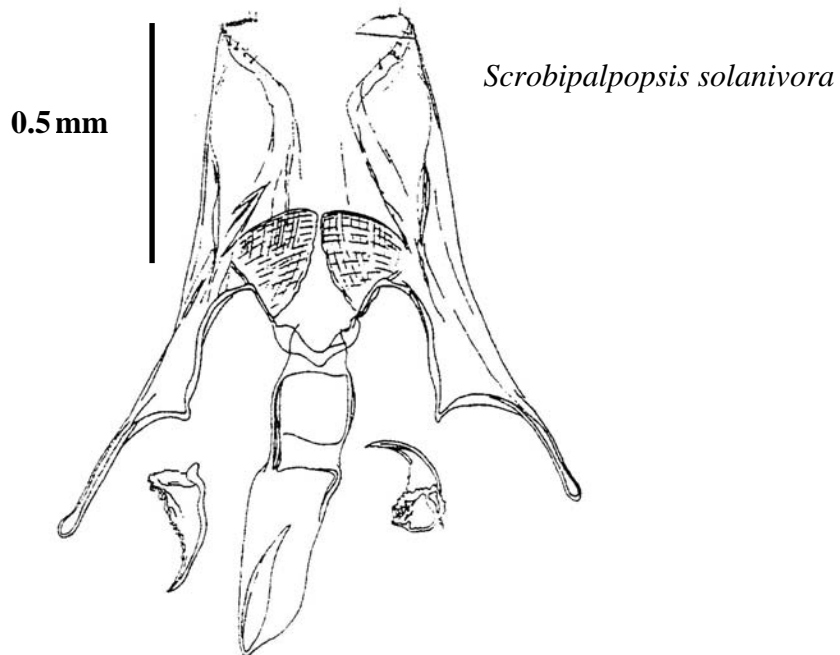
Symmetrischema tangolias

S. solanivora 1.6 – 1.8 mm *S. tangolias* 1.3 – 1.5 mm *P. operculella* 0.6 – 0.8 mm

Web Fig. 2 : Male genitalia (after Povolný, 1973)

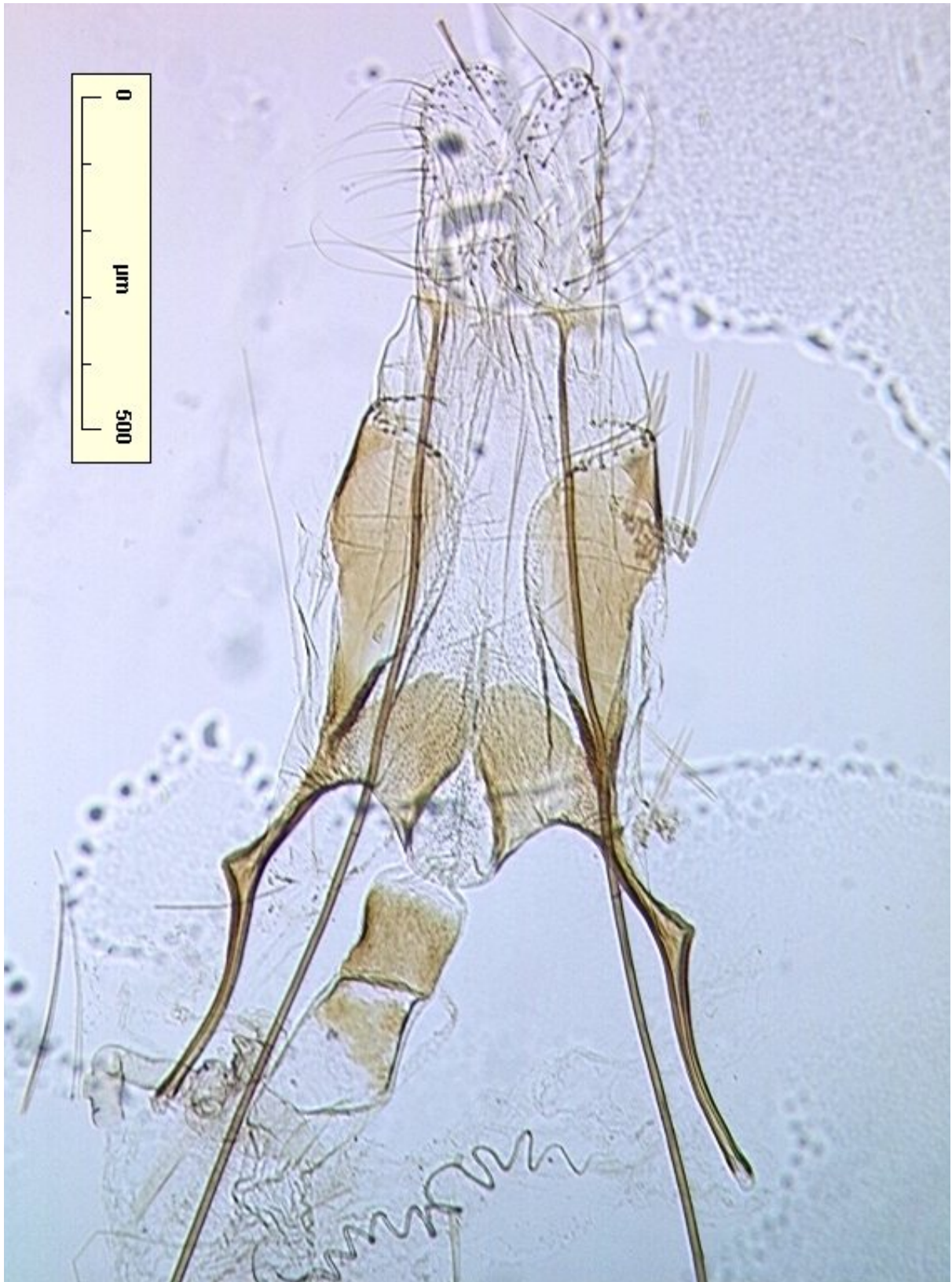


Web Fig. 3 : *Scrobipalposis solanivora*
Male genitalia
(photo J.-F. Germain)

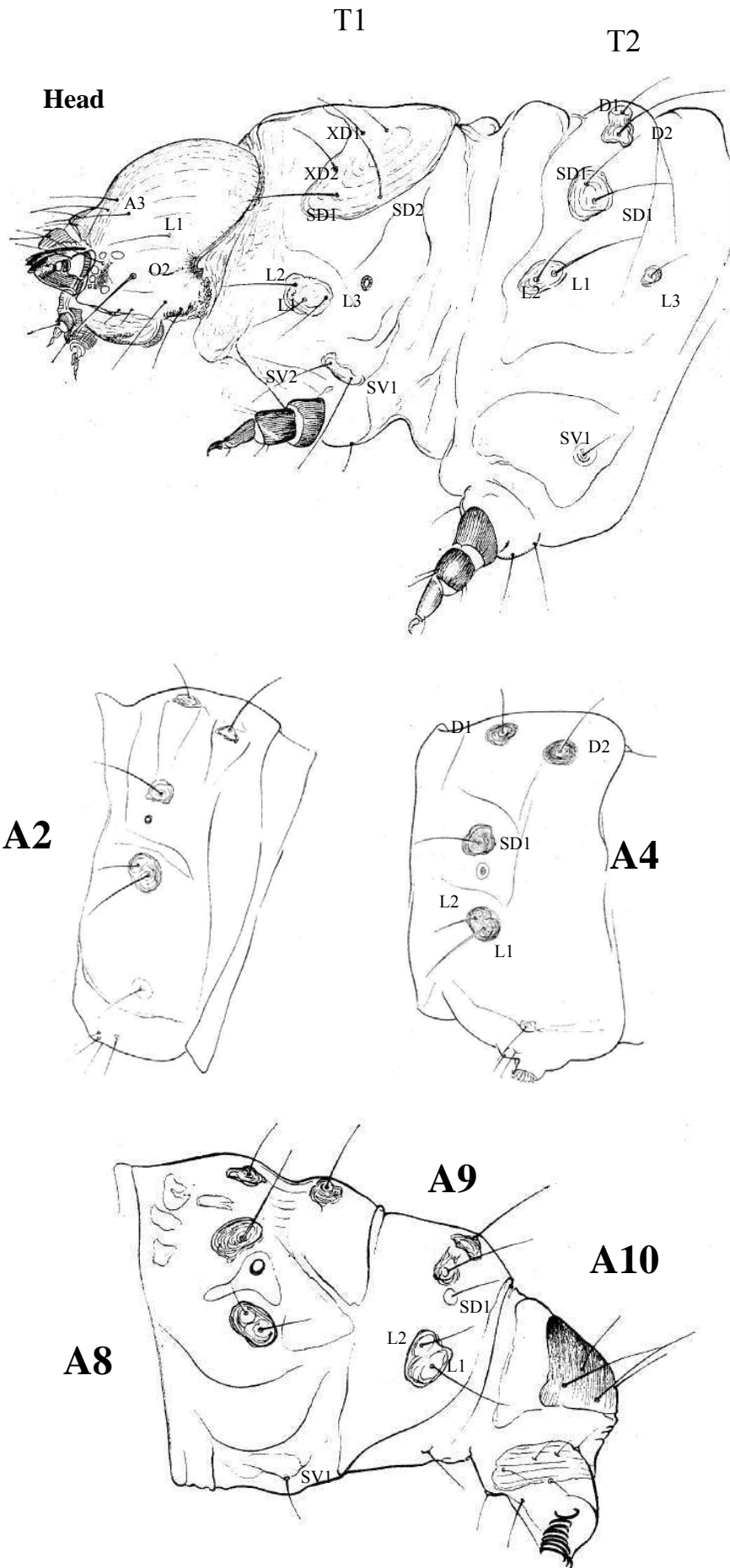


| | |
|---|-----------------|
| <i>S. solanivora</i> female subg. plate | 1 – 1.2 mm |
| <i>S. tangolias</i> | // 0.8 – 1.1 mm |
| <i>P. operculella</i> | // 0.4 – 0.6 mm |

Web Fig. 4 : female genitalia (after Povolný, 1973)
 (Subgenital plate : an apical process which covers and protects the gonopore)



Web Fig. 5 *Scrobipalopsis solanivora*
Female genitalia
(photo J.-F. Germain)



Web Fig. 6 Larvae, chetotaxy last instar (after Povolný, 1973)



(photo André Pollet ©IRD)

Phthorimaea operculella
Scrobipalposis solanivora
Symmetrischema tangolias

Web Fig. 7 larvae (*S. solanivora* last instar: 12.4 to 14.2 mm)