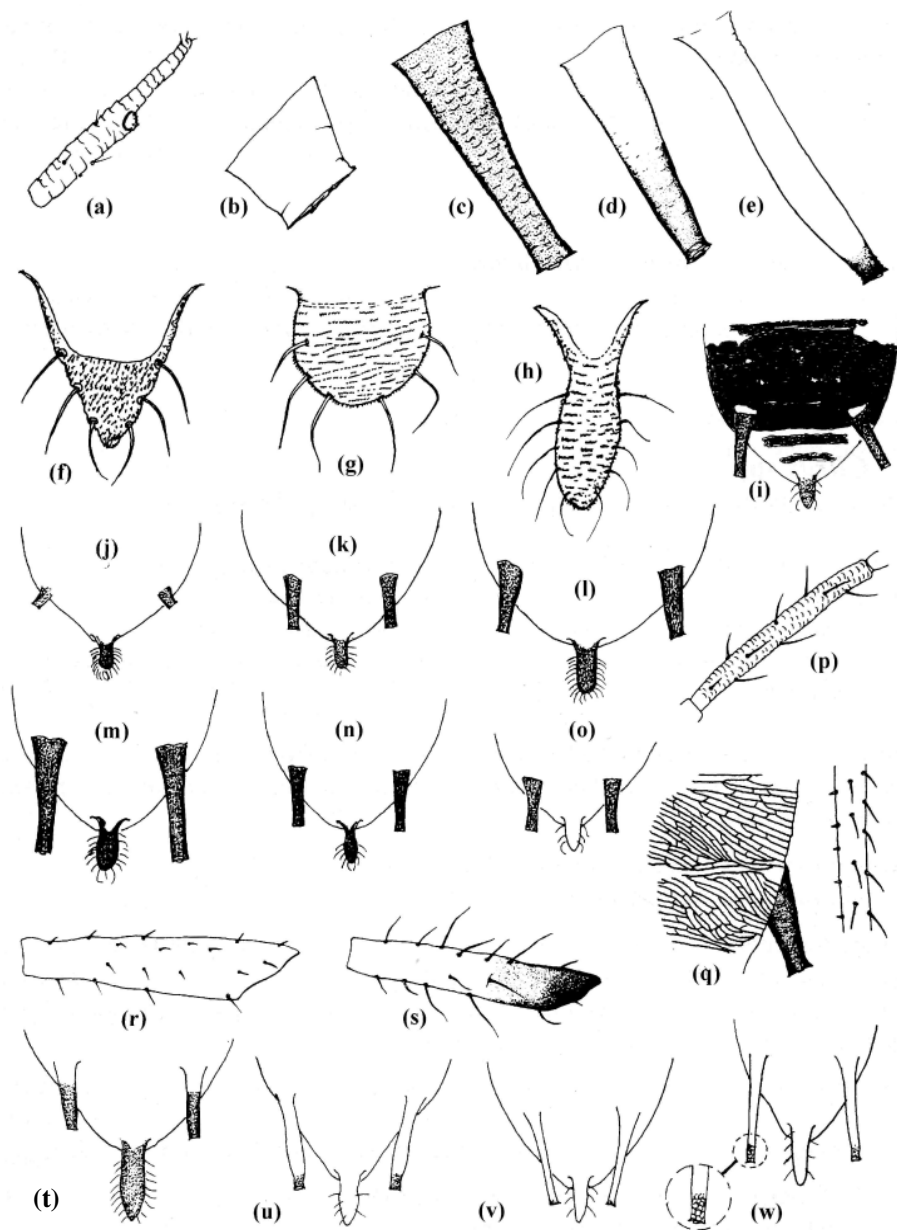
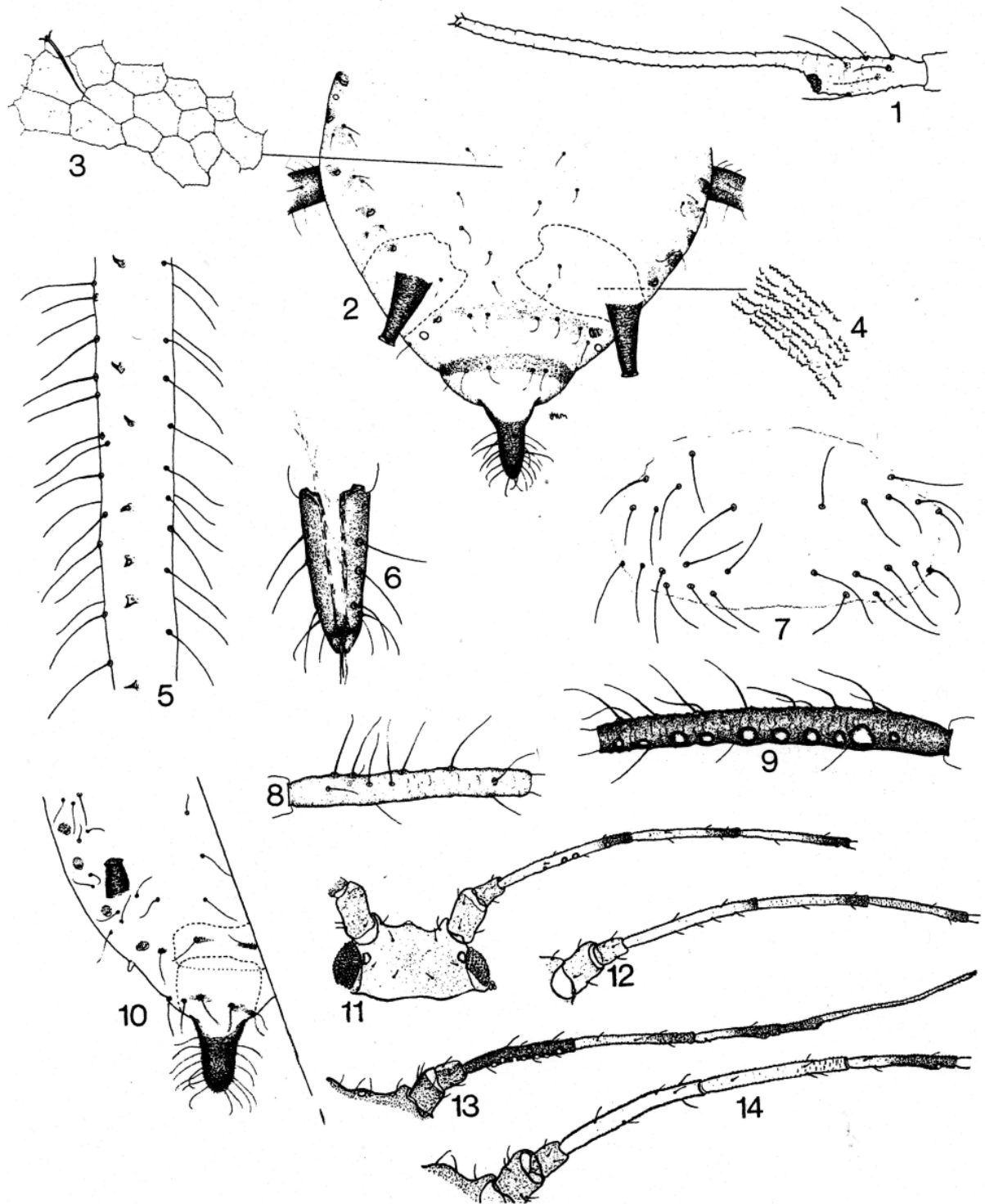


Web Fig. 1 Dorsal views of heads of various Aphidinae, to show differences in shape of head and degree of development of the antennal tubercles. (a) – (c) Weakly developed or undeveloped: (a) *Aphis fabae*; (b) *Rhopalosiphum padi*; (c) *Pseudaphis abyssinica*. (d) – (f) Well-developed: (d) inner faces divergent – *Macrosiphum euphorbiae*; (e) inner faces parallel – *Aulacorthum solani*; (f) inner faces convergent – *Myzus persicae*.



Web Fig. 2. Citrus aphids. (a) Last antennal segment of *Brachyunguis harmalae*, (b)-(e) siphunculi of (b) *B. harmalae*, (c) *Aphis spiraecola*, (d) *Sinomegoura citricola*, (e) *Aulacorthum magnoliae*, (f) cauda of *Brachyunguis harmalae*; (g) same of *Brachycaudus helichrysi*, (h) same of *A. spiraecola*, (i)-(o) ends of abdomens of (i) *Aphis craccivora*, (j) *Toxoptera odinae*, (k) *T. aurantii*, (l) *T. citricidus*, (m) *Aphis nerii*, (n) *A. spiraecola*, (o) *A. gossypii*, (p) antennal segment III of *T. citricidus*, (q) stridulatory apparatus of *T. aurantii*, (r) hind femur of *A. gossypii*, (s) same of *A. spiraecola*, (t)-(w) end of abdomens of (t) *Sinomegoura citricola*, (u) *Aulacorthum magnoliae*, (v) *Aulacorthum solani*, (w) *Macrosiphum euphorbiae*.



Web Figs 1-7. *Toxoptera victoriae* sp. n., aptera: (1) antennal segment VI; (2) abdomen, dorsum (extent of ventral stridulatory roughening indicated by dashed line); (3) detail of dorso-median abdominal cuticle; (4) detail of ventro-marginal abdominal stridulatory cuticle; (5) section of posterior tibia with modified stridulatory pegs; (6) ultimate rostral segment; (7) subgenital plate.

Web Figs 8-10. *Toxoptera odinae*: (8) aptera, antennal segment III; (9) alata, antennal segment III; (10) abdomen, dorsal.

Web Figs 11-12. *Toxoptera aurantii*: (11) alata, head and antennal segments I-V; (12) aptera, antennal segments I-V.

Web Figs 13-14. *Toxoptera citricidus*: (13) alata, antenna; (14) aptera, antennal segments I-V.