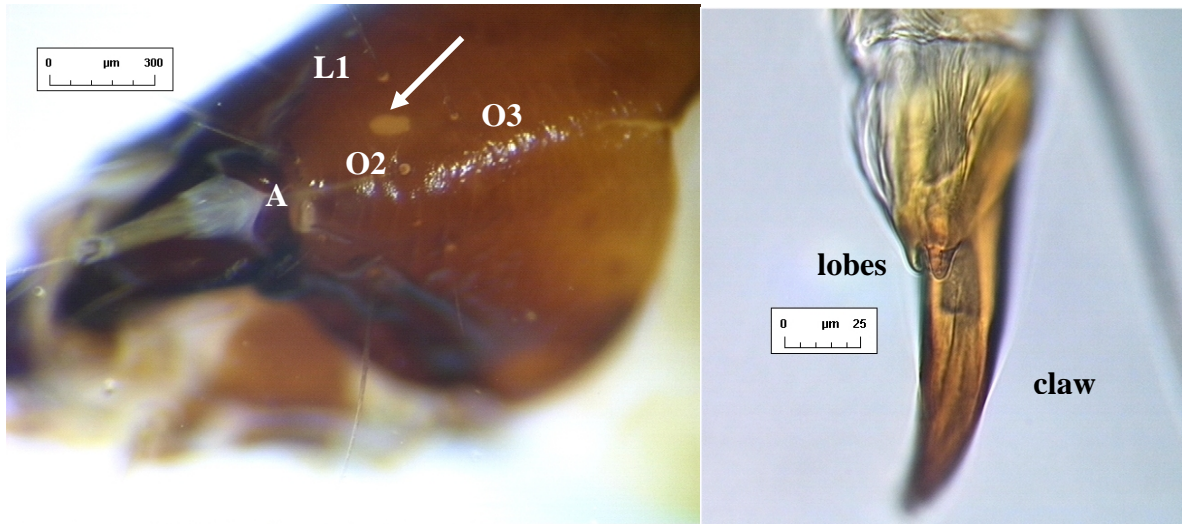
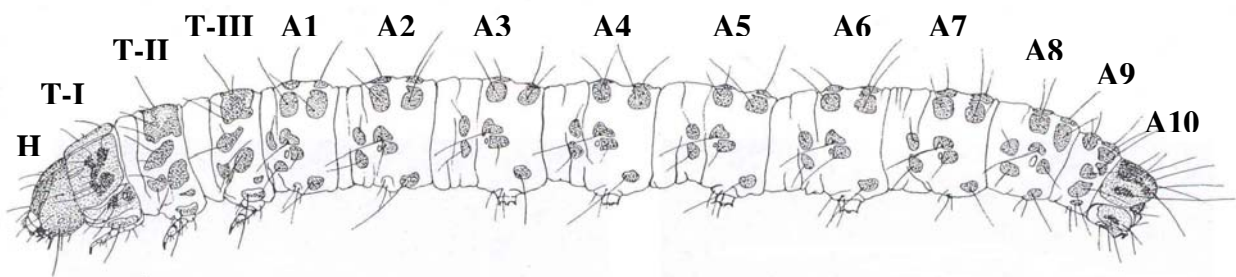


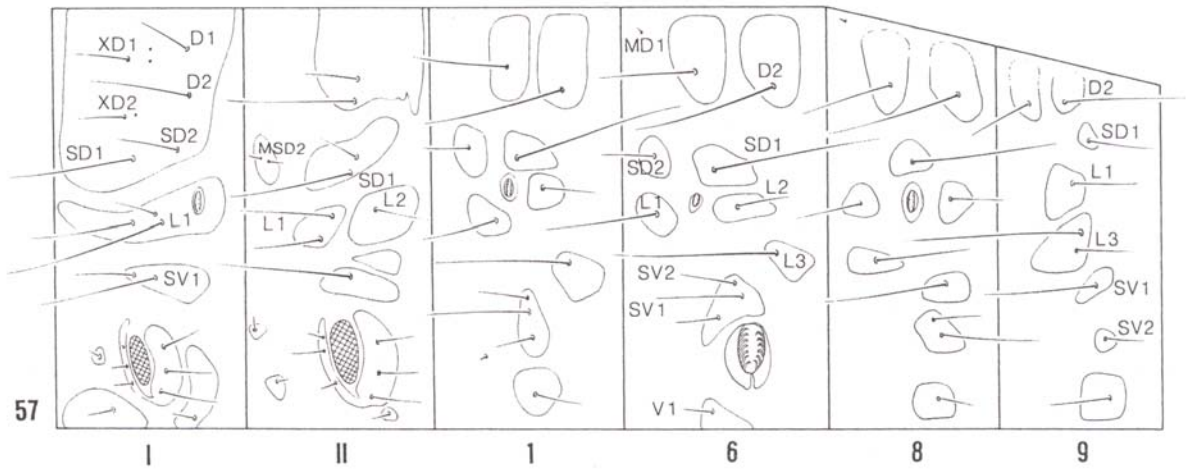
**Web Fig 1.** *Opogona sacchari*, adult genitalia. a), Male, ventral view (0.25 mm). b). Lateral view. c), Lateral view of valva. d). Aedoeagus, lateral view. e), Female, ventral view (1 mm). f), Detail of signum in Fig. 83. (Scale lengths in parenthesis) (from Davis & Peña, 1990).



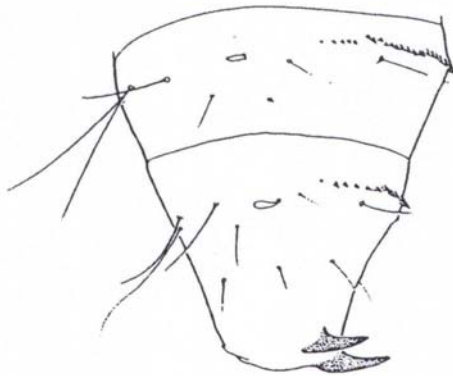
**Web Fig 2.** *Opogona sacchari* larva. Left: head lateral view, position of lateral ocellus (arrow), head capsule reddish-brown, ocellus cream-yellow; O2, O3 = ocellular setae 2 3; L1 = lateral seta 1; A = antenna; Right: pretarsal claw of prothorax (photos, Germain-INRA, 2003)



**Web Fig 3.** Last instar larva of *Opogona sacchari* (Bojer), lateral view; H = head; T = Thorax, A = abdomen (Top: photo Germain-INRA, 2003; bottom: drawing from Heppner *et al.*, 1987).



**Web Fig 4.** *Opogona sacchari* larval chaetotaxy (from Davis & Pena, 1990): Body segments from thorax I, II and abdomen 1, 6, 8-9; XD, MD, D = dorsal, SD = subdorsal, L = lateral, V = ventral, SV = subventral setae



**Web Fig 5.** *Opogona sacchari*, caudal end of pupa (from Heppner *et al.*, 1987)