



Experience in France

Bénédicte Gautier & Philippe Reynaud

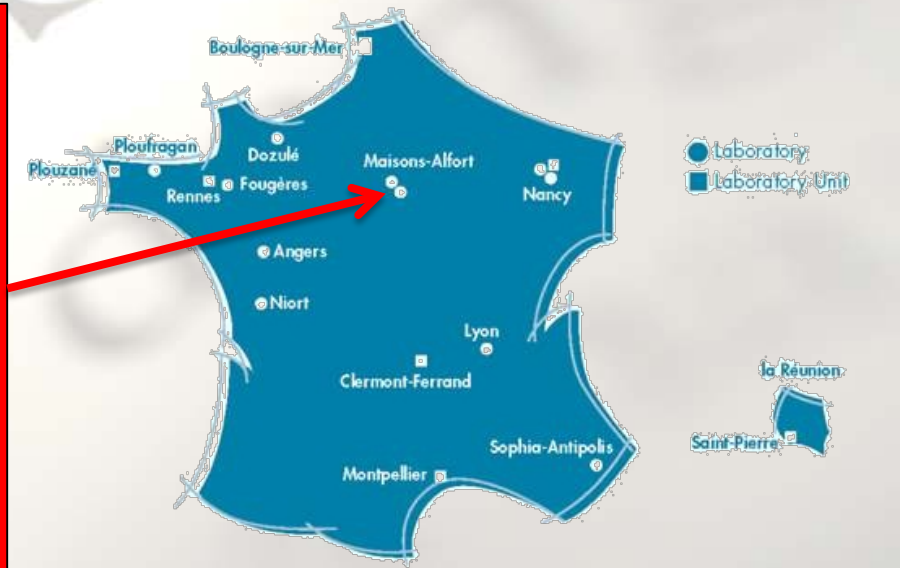


Workshop on Evaluation and regulation of biological Control Agents
Budapest 2015-11-23/24

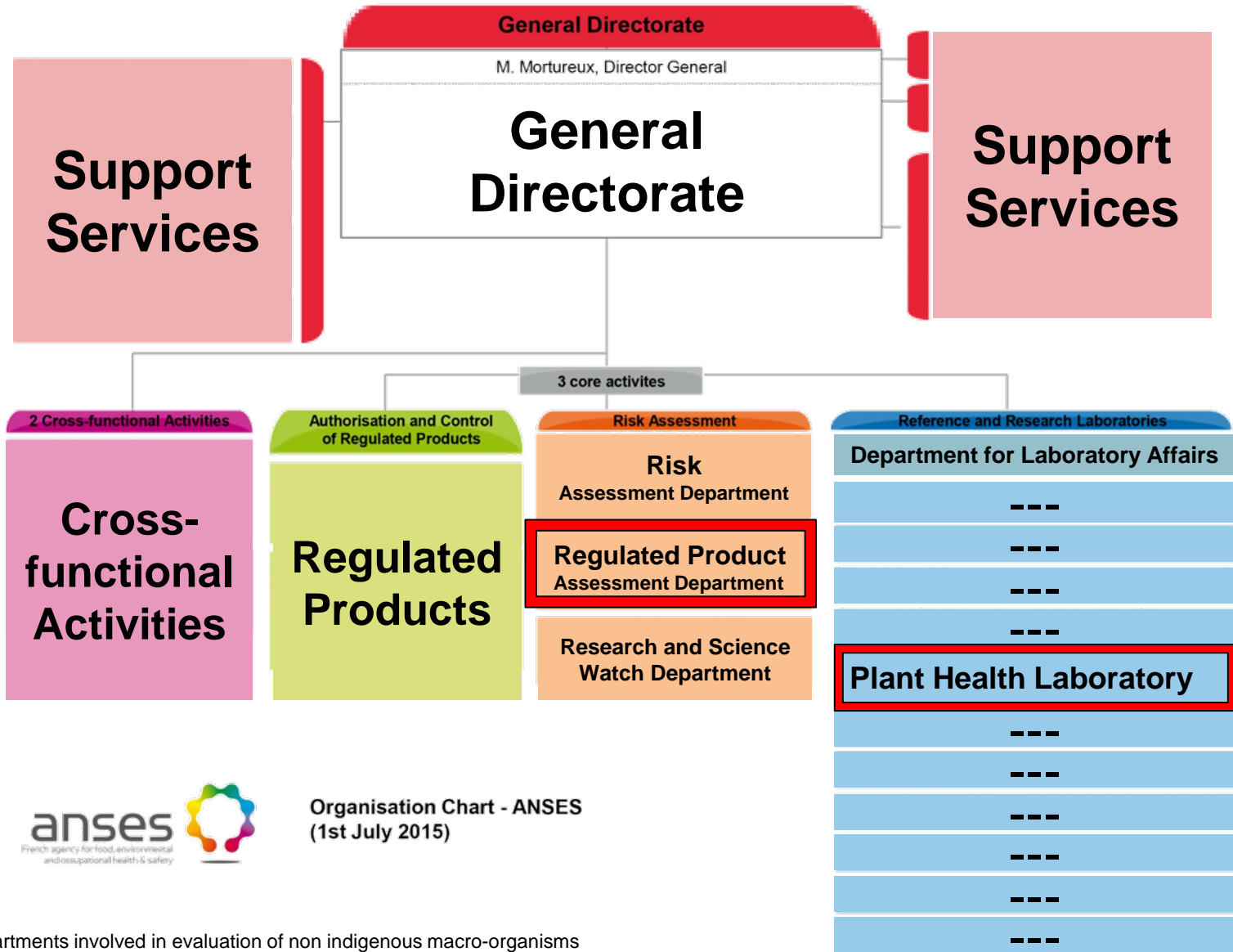
What is Anses ?

French Agency for Food, Environmental and Occupational Health & Safety

Agence nationale de sécurité sanitaire de l'alimentation, de l'environnement et du travail



Who is involved in the assessment of BCA in Anses ?



**LAW N° 2010-788 - 12
JULY 2010
(JORF 13 JULY 2010)**

**CHAPITRE VIII : RURAL CODE
TITRE V LIVRE II
ARTICLES L.258-1 & L.258-2**



Entry into the territory and introduction into the environment of a non-indigenous macro-organism useful to plants, particularly in the context of biological control, **are subject to prior authorization.**

=> BCA and pollinators

**DECREE N°
2012-140**

30 JANUARY 2012



A request for prior authorization has to be submitted to Anses.

- **The opinion of Anses must include :**
 - ✓ A phytosanitary risk assessment;
 - ✓ An environmental risk assessment, in particular for biodiversity
 - ✓ Assessment of the efficacy and expected benefits;
 - ✓ Recommendations

ORDER

28 JUNE 2012



Describe the content of the prior authorization for entry into the territory or introduction into the environment

Definition and type of applications

Non-indigenous : “which is not established in the territory affected by the entry or introduction into the environment”



Type of application

Assessment

Authorization

**Import under
containment (for
mass rearing or
research)**



**Anses
Plant Health
Laboratory**



Regional authorities

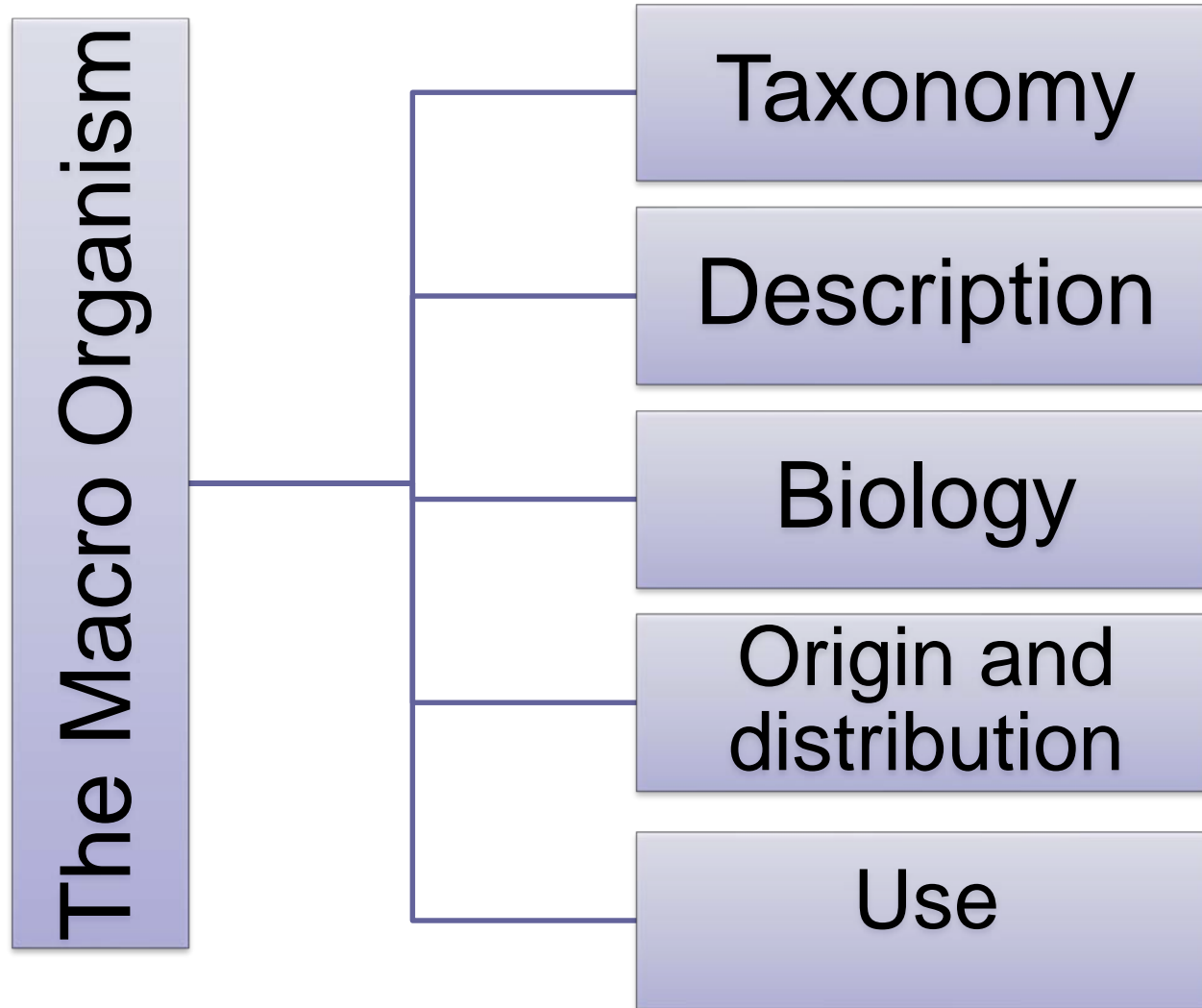
**Introduction
(release) into the
environment**



**Anses
Regulated Products
Assessment
department**



**Common order from
Ministry of
agriculture and
Ministry of
environment**

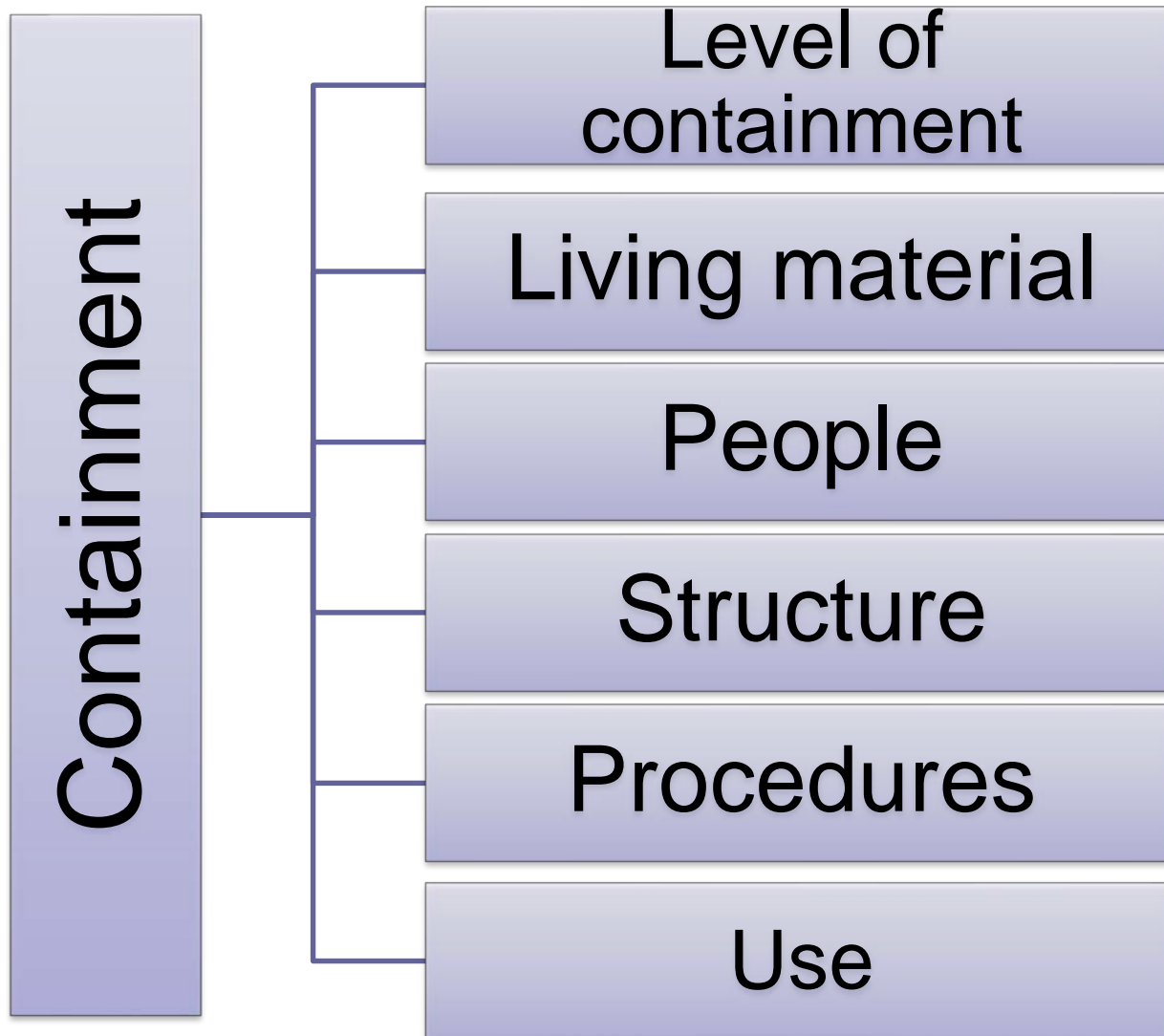


Import under containment (for mass rearing or research)

Introduction (release) into the environment



Application for authorization to import the MO for research or mass-rearing under contained conditions (Part 3)



Import under containment (for mass rearing or research)



Assessment of risks and benefits

Introduction (release)
into the environment

Probability of establishment
into the environment

Probability of dispersal into the
environnement

Risk for
human or
animal health

Risk for plant
health

Risk for the
environment
(biodiversity)

Efficacy and
benefits

⇒ The opinion of Anses is delivered for a given territory :
mainland France, Corsica, Guadeloupe, Martinique,
Reunion island, Mayotte, Saint-Barthélemy, Saint-Martin,
Saint-Pierre et Miquelon

⇒ Deposit of voucher specimens at CBGP in Montpellier

3 years after the implementation of this new regulation...

- Applications for import under containment
 - 14 applications : 9 in 2013 ; 1 in 2014 et 4 in 2015
 - 6 by French teaching and research institutions
 - 5 by foreign institutions
 - 2 by private companies
 - 1 by technical institutes
- Applications for introduction into the environment
 - 7 applications : 1 assessed in 2014, 5 assessed in 2015, 1 application under assessment
 - 2 by a French research institution
 - 2 by a technical association
 - 3 by private companies



And for those introduced into the environment before the new regulation...

- Anses published an opinion in 2014 on 448 macro-organisms declared as introduced in France before July 2012 by private and public companies

	Number of declared MO	Number of species
Hymenoptera	235	74
Mites	63	16
Coleoptera	45	16
Nematodes	38	6
Hemiptera	30	5
Diptera	21	4
Neuroptera	11	3
Thysanoptera	5	1
TOTAL	448	125



- Ministries of agriculture and environment published an order which lists the macro-organisms exempted of applications for authorization and the territory in which this exemption is valid.

Thanks for your attention...

