



**EEC – EPPO MEETING
Moscow, 6-8 June 2018**

A NEW STATUS FOR QUARANTINE PESTS, PRIORITY PESTS AND RNQPs IN THE EUROPEAN UNION

**Harry Arijs
DG Health and Food Safety – Unit Plant Health**

- 1957 EEC created (6 Member States)**
- 1977 First Common plant health legislation (9 MS)**
- 1993 Internal common market (12 MS)**
- Now Council Directive 2000/29/EC (28 MS)**

2019 New + fully harmonized regime:

Regulation (EU) 2016/2031 of the European Parliament and the Council

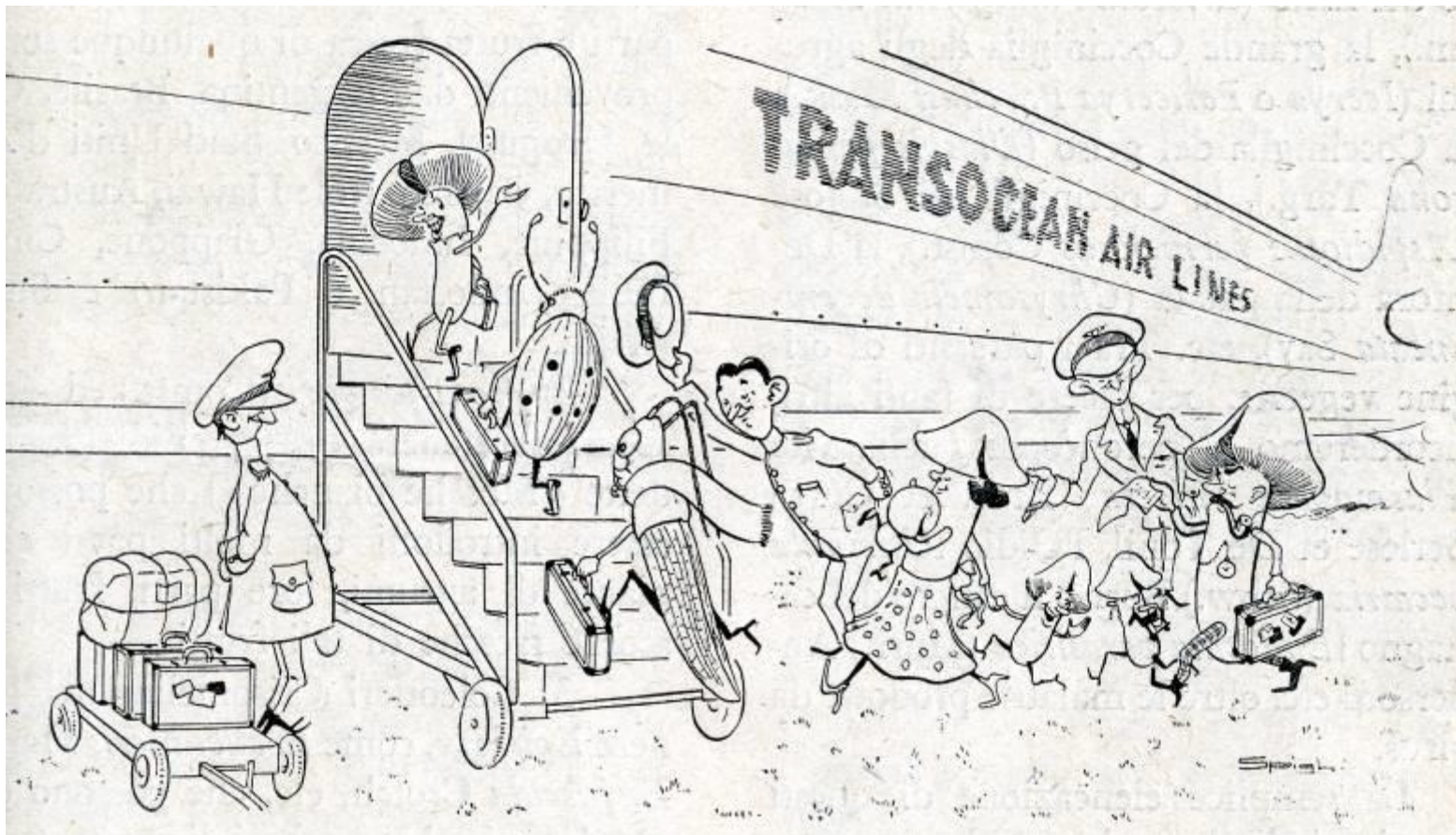
applicable from 14 December 2019



European

Why ?

As international trade continues to expand, so does the number of pests that becomes established outside their native range



OBJECTIVE:

**PROTECT EUROPE'S AGRICULTURE,
HORTICULTURE, FORESTRY AND THE
ENVIRONMENT FROM NEW PESTS**

- **by horizon scanning**
- **by early detection at import or in the field
when eradication is still achievable**
- **by increasing the % of succesful eradication
campaigns**

IPPC + ISPMS BASED



European

Scope

QUARANTINE PESTS

PEST **IPPC definition**

REGULATED ***250 pests listed***

- **not present**
- **not widely distributed + under official control**

- **Union** **quarantine pests**
- **Protected zone quarantine pest**

INTRODUCTION AND SPREAD PROHIBITED

NB: harmful plants > IAS Regulation

PRIORITY PESTS

- **Subdivision of Union quarantine pests**
- **Listing of most dangerous QP for the EU**
- **Extra requirements:**
 - **Stricter import control**
 - **Annual surveillance of the EU territory**
 - **More information**
 - **Contingency plan for action in case of outbreak**
 - **Simulation exercises**

REGULATED NON-QUARANTINE PESTS

- **RNQPs for specific plants for planting**
- **Based on IPPC definition & ISPM 21**
 - ✓ Pests known to be present in EU
 - ✓ Causing important economic impact on the quality of propagating material
- ***NO INTRODUCTION OR INTERNAL MOVEMENT OF PLANTS FOR PLANTING WITH RNQP ABOVE THE TOLERANCE LEVEL***
- **Not new: today regulated as quality pests or QP**

REGULATED MATERIAL

- ✓ **Plants for planting, including seeds**
- ✓ **Plants (all live plant material: fruits & vegetables, cut flowers, scions, ...)**
- ✓ **Listed plant products (e.g. coniferous wood)**
- ✓ **Listed other products (e.g. WPM)**

***IMPORT + MOVEMENT RESTRICTIONS AGAINST
REGULATED PESTS (except for high risk plants)***

REGULATED AREA

- ✓ **The Union territory (European part)**
- ✓ **Protected zones**
 - **Equivalent to Pest Free Areas**
 - **EU legal status**

 - **Regular surveys**
 - **Restrictions for movements into the PZ**



**Basis for
regulation**

TECHNICAL JUSTIFICATION

- **Reports from import inspections (EUROPHYT Interceptions)**
- **Reports from outbreaks (EUROPHYT Outbreaks)**
- **Horizon scanning for emerging risks (EFSA)**
- **Alert list EPPO**
- **Reporting third countries**

SCIENTIFIC JUSTIFICATION FOR QP

- **For new regulation**
 - ***Emergency measures on basis of preliminary PRA***
 - ***Permanent listing of QP on basis of full PRA***
 - ***PRA by EFSA / EPPO / MS with EU reference***

- **For review of existing regulation**
 - ***Pest categorisation by EFSA***
 - ***Full PRA for difficult cases***

SCIENTIFIC JUSTIFICATION FOR RNQP

- **Review of existing regulation**
 - ***As QP known to be present in EU but under control***
 - ***As quality pest in Marketing Directives for propagating material***
- **EPPO project**

DECISION MAKING PROCESS

- 1. Draft Commission Implementing Act**
- 2. Discussion with all Member States in Standing Committee**
- 3. Stakeholder consultation**
- 4. Vote by qualified majority of Member States**
- 5. Adoption and publication by Commission**
- 6. WTO notification**



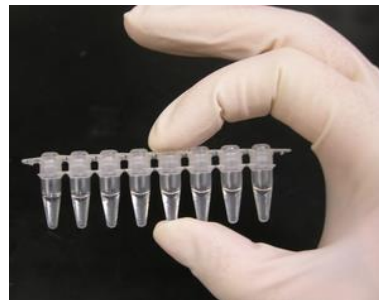
Quarantine pest management

NOTIFICATION OF FINDINGS

- **For Q-pest + potential Q-pest**
- **by professional operators**
- **+ competent authorities**



- **where needed: assistance by EU Reference Labs**



INFORMATION

- **Relevant professional operators must be informed by the competent authority**



- **Outbreak notifications public**
- **Citizens must be informed in case of priority pests**

IMPORT CHECKS

- **systematic documentary, identity and physical check of regulated material**
- **Reduced frequency for fruits/cut flowers/wood**



SURVEILLANCE OF THE TERRITORY

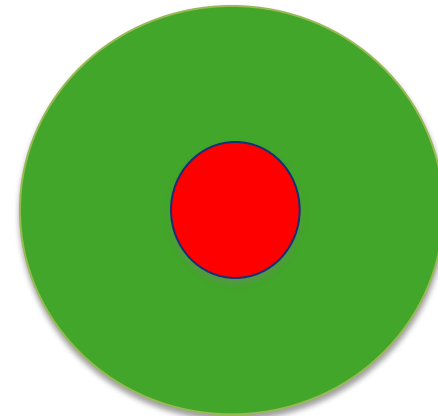
- **Multi-annual survey programme**
- **EU co-financing**

***Epitrix* (potato flea beetle):**



OUTBREAK MANAGEMENT

- **Eradication approach = standard obligation against QP**
- **Demarcated areas**
 - **Infested zone**
 - **Buffer zone**
- **Containment = only if agreed at EU level**
- **EU co-financing**



CRISIS PREPAREDNESS

- **Contingency plans**
for all priority pests
- **Simulation exercises**
- **Awareness campaigns**



For further information:

http://ec.europa.eu/food/plant/plant_health_biocuricity/legislation_en

THANK YOU